

POINT ELECTRODE

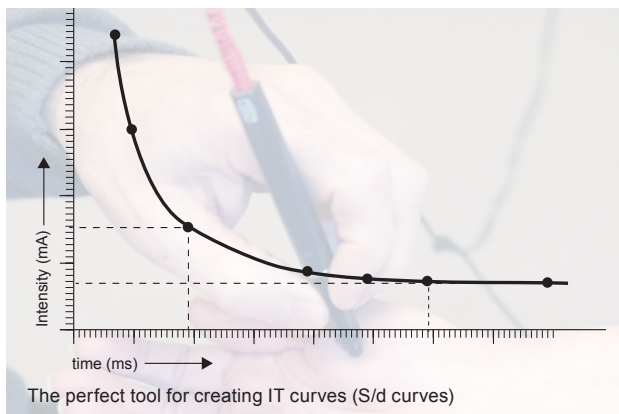
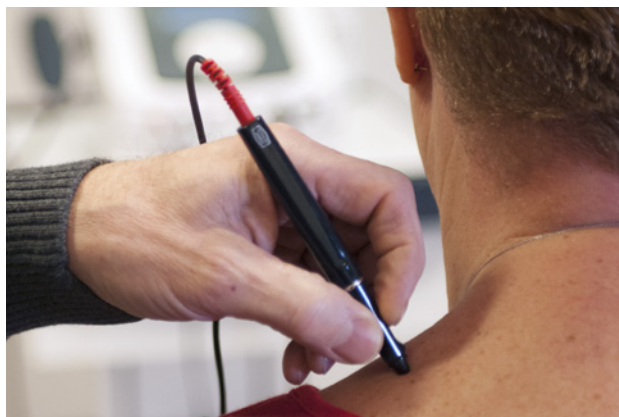


The new Enraf-Nonius Point Electrode (art. nr. 3444180) is your ideal electrotherapy accessory for

- Treatment of trigger points
- Stimulation of very small muscles (like muscles in the hand)
- The most efficient method for finding the exact location of motor point(s) for NMES
- The perfect tool for creating IT curves (S/d curves [Strength/duration curves])
- The ideal tool for treatment of acupuncture points

Features of the Enraf-Nonius Point Electrode

- Beautiful design with clip and cover - easy to carry around
- Standard delivered with
 - a *bio-compatible conductive cap*
 - 8 spare caps
- Can be used with all Enraf-Nonius electrostimulation units
 - It can be attached with a 2 mm male connector
 - For older units (with 4 mm cables) an adapter is available (art. nr. 1460424)



3444180 POINT ELECTRODE



bio-compatible conductive cup